

SURVEYOR



Designed and developed by Industrial Design Research, Inc. for the State of California Lifeguards. Surveyor incorporates the results of extensive research of the requirements and day-to-day activities of the users. Surveyor establishes new standards for quality, comfort, and operation through innovative design and engineering. Surveyor's quality, features, and price combine to make it your only choice.

Specifications and pricing may be changed without notice.

INDUSTRIAL DESIGN RESEARCH

3121 West Central Avenue, Santa Ana CA 92704 / PH (714) 557-4009 / FAX (714) 545-8137 / INDESRE@SBCGLOBAL.NET



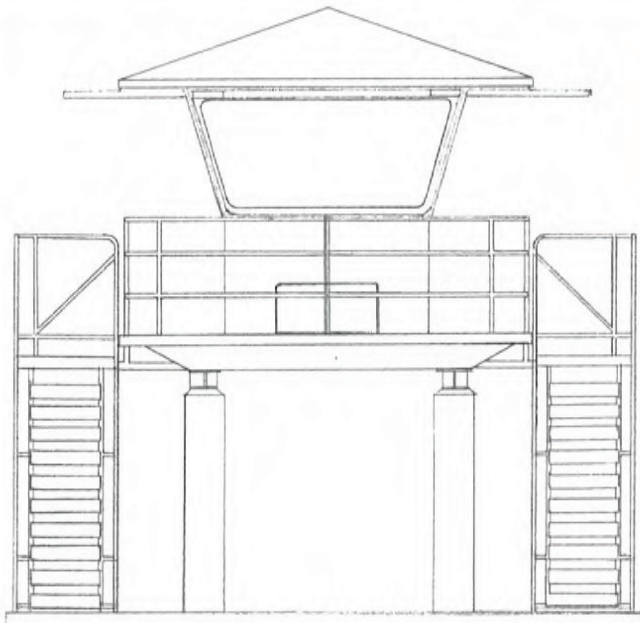
**SURVEYOR
LIFEGUARD
OBSERVATION
TOWER
(COLUMN
ADAPTED)**

One of two installations at Torrey Pines State Beach, CA. These towers use 6 course stainless steel railings, adjustable ladders and stainless steel support structures.



SURVEYOR

INDUSTRIAL DESIGN RESEARCH



Permanent site on concrete columns,
dual lateral 35 degree low angle stairs.

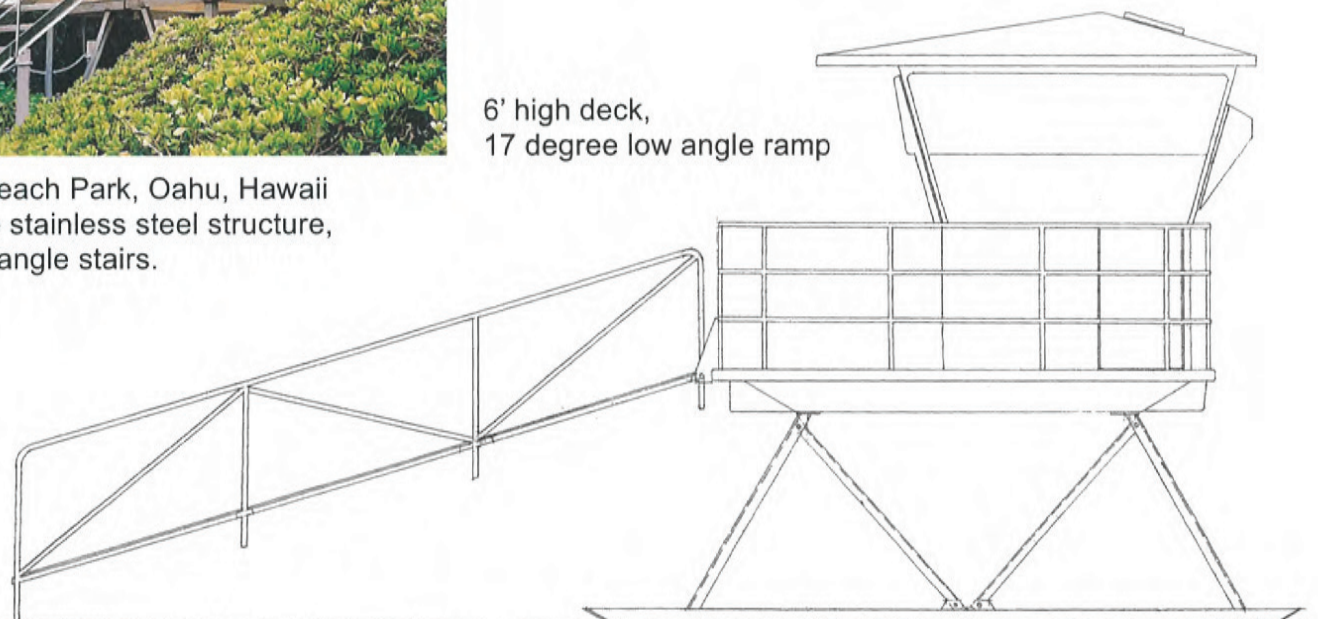


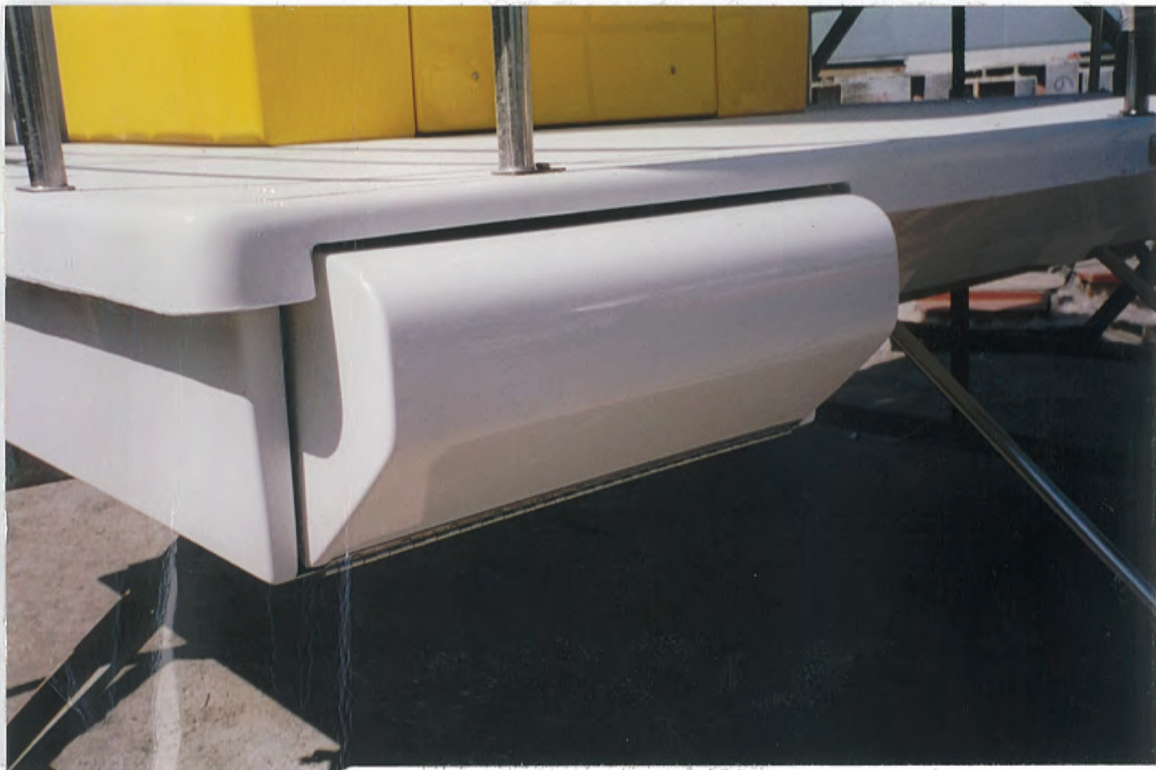
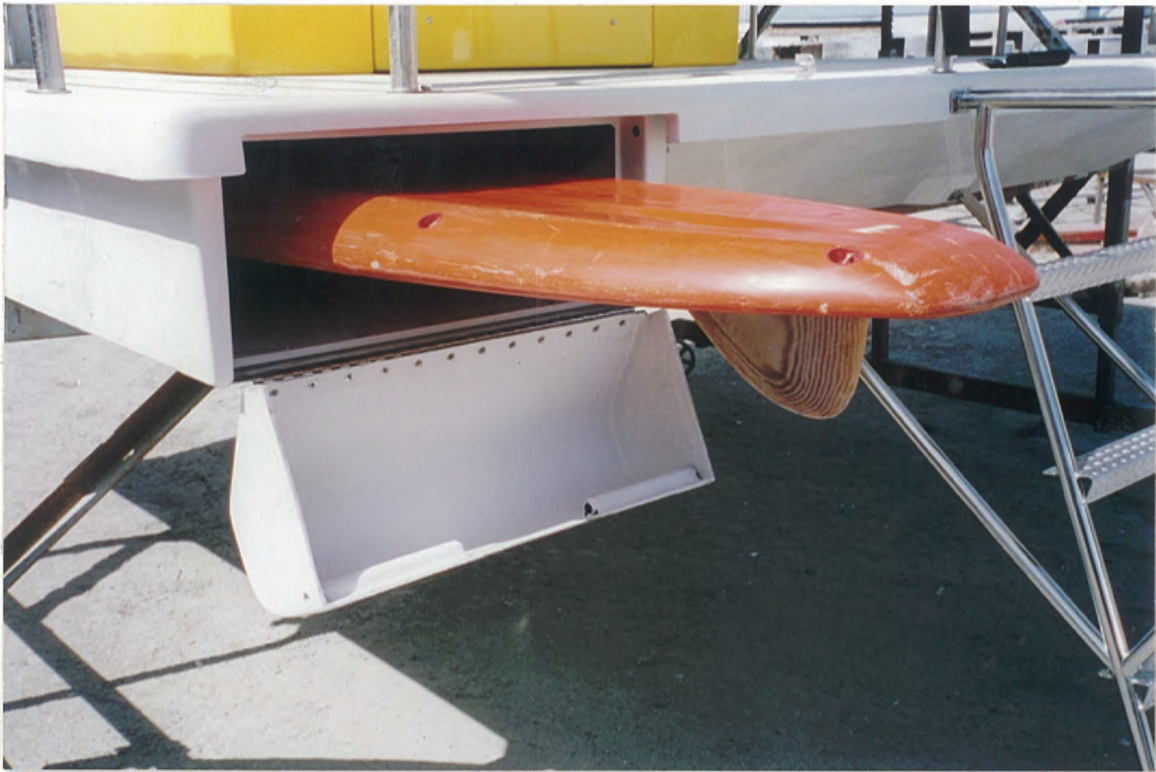
Sandy Beach Park, Oahu, Hawaii
Permanent site stainless steel structure,
35 degree low angle stairs.



Waimea Bay Beach Park, Oahu, Hawaii
Permanent site stainless steel structure,
35 degree low angle stairs.

6' high deck,
17 degree low angle ramp





SURVEYOR SURFBOARD STORAGE LOCKER

Built into the underdeck cavity, the locker will accommodate boards up to 12' long and 24" in width. The locker incorporates ABS rollers and a fiberglass access door with all stainless steel hardware.

SURVEYOR

INDUSTRIAL DESIGN RESEARCH

SURVEYOR FEATURES



Combination adjustable vent / bench seat



Interior view with lockable cabinet

- Two doors provide easy entry and exit
- Steel reinforced window corner posts
- Ventilation by passive convection circulation
- Aircraft quality stainless steel latches throughout
- 5-1/2' deep foredeck--for generous exterior observation area
- Hot-dip galvanized support structure and skids for maximum corrosion resistance
- Electropolished stainless steel railing and ladder
- Deck is jig bonded to form a full perimeter box section modules--to resist racking during relocation
- Exclusive door configuration provides minimum visual obstruction during entry and exit
- Welded steel tube, modular-truss, support structure
- Easily secured using only one exterior lock
- Molded and finished interior cabinets and shelf
- Textured non-skid deck
- All glass is quickly and easily replaceable if necessary
- One-piece shutters
- Completely open or secure in less than one minute
- Shutters automatically latch--open or closed
- Selective laminate and reinforcement schedules
- Lockable interior cabinet
- All hatches, doors, and shutters are designed for maximum vandalism resistance
- Exterior bench seat

SURVEYOR

INDUSTRIAL DESIGN RESEARCH

DESIGN SPECIFICATIONS AND FEATURES

- Molded structural fiberglass components mounted on a modular steel support structure.
Galvanized steel standard (304 stainless steel optional). The support structure incorporates skids designed for towing the completely assembled APEX to and from designated beach sites.
- The Shelter provides protection from sun, wind and inclement weather.
- Maximum forward visibility throughout a 180 degree field for observers.
- Entry-egress to the shelter via two doors; one on the right of the forward-facing shelter, and one on the left. Windows are included in both doors.
- Ventilation and interior air flow when the shelter doors are closed via front and roof vent hatches.
- Resistance to vandalism is provided by one-piece fiberglass shutters.
- Doors and shutters use hardware designed so that the shelter may be secured with one exterior keyed lock.
- The operation of the doors and shutters are designed so as to require one person at a time, a period of two (2) minutes or less, to open or to secure the station.
- All three windows slope out from the bottom approximately 15 degrees to reflect heat and reduce glare.
- Windows are of 1/4" tempered glass, tinted grey, set with "zip strip" seal.
- All hinges, latches, fasteners are stainless steel.
- Exterior bench seat is provided for the lifeguard on the front of the shelter.
- Interior of shelter is equipped with a fiberglass shelf and two storage cabinets.
(one equipped with a lockable door)
- Fiberglass components are finished with the highest quality polyester gel-coat finish.
- Visually exposed backside surfaces of fiberglass panels are flow coated in white gel-coat.
- Floor and deck areas have repairable non-skid surfaces, reinforced with 1/2" thick balsa-core.
- Fiberglass corner structures are reduced to a minimum in order to provide maximum visibility and reinforced with 3/4" round steel tubing.
- 30 degree ladder with diamond plate treads.
- Railings and ladder are polished for maximum corrosion resistance.
- Opti-grey glass (92 percent ultraviolet screening).

SURVEYOR SR

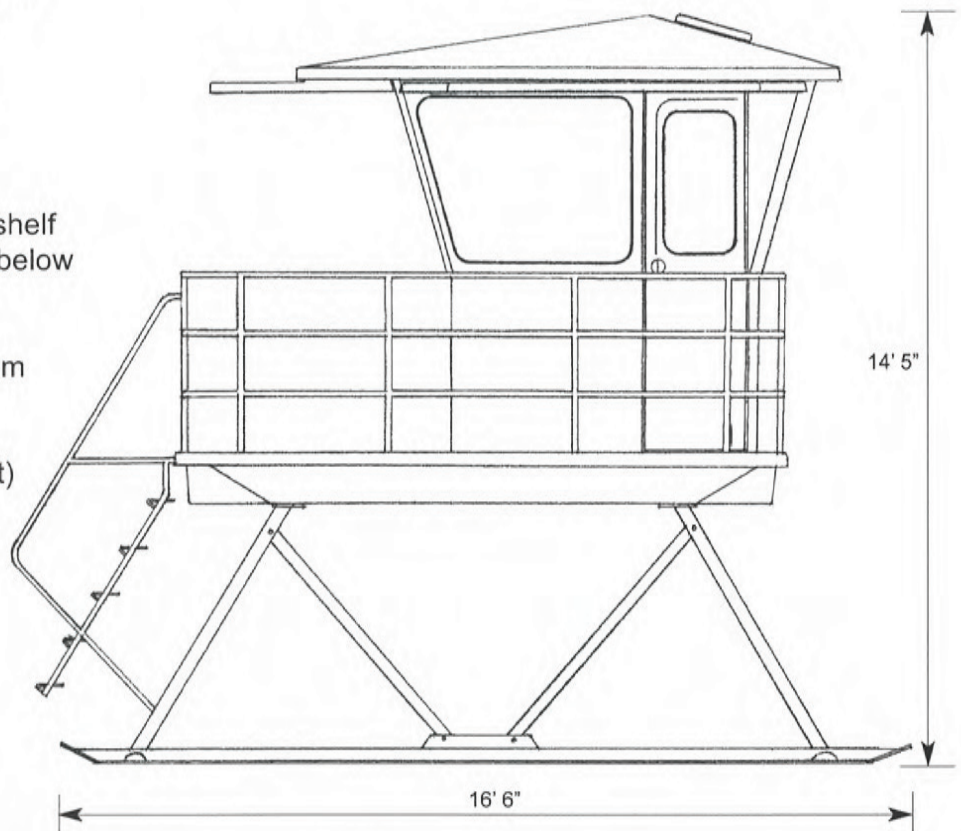
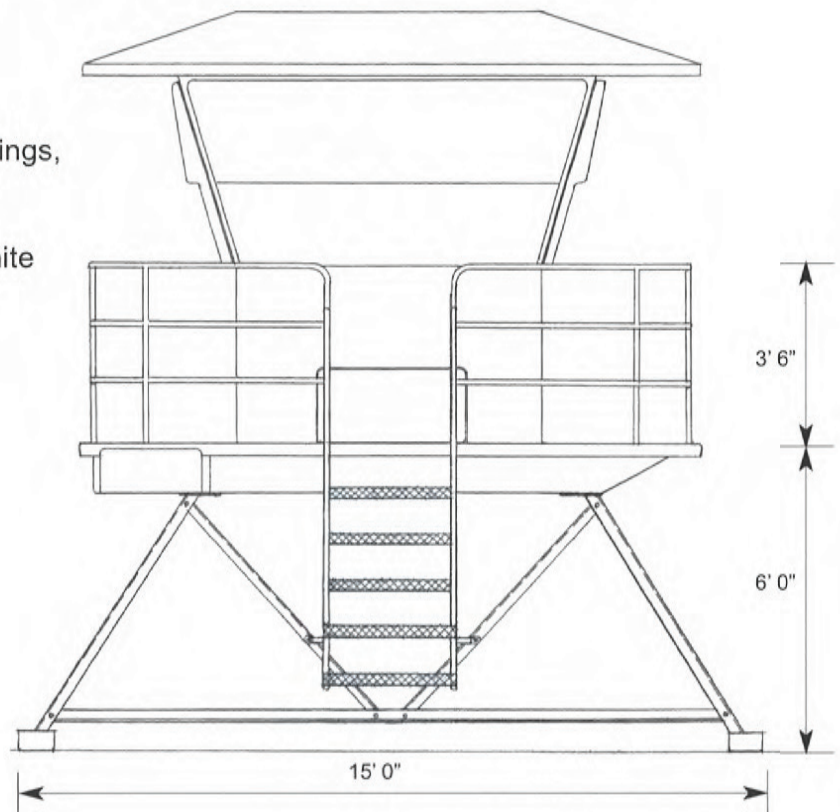
PRICING / OPTIONS

SURVEYOR SR

galvanized steel support structure with 10" wide skids, 3 course stainless steel railings, 6' deck height, 30 degree ladder, full width interior counter-shelf with two cabinets located below, standard color: Newport White

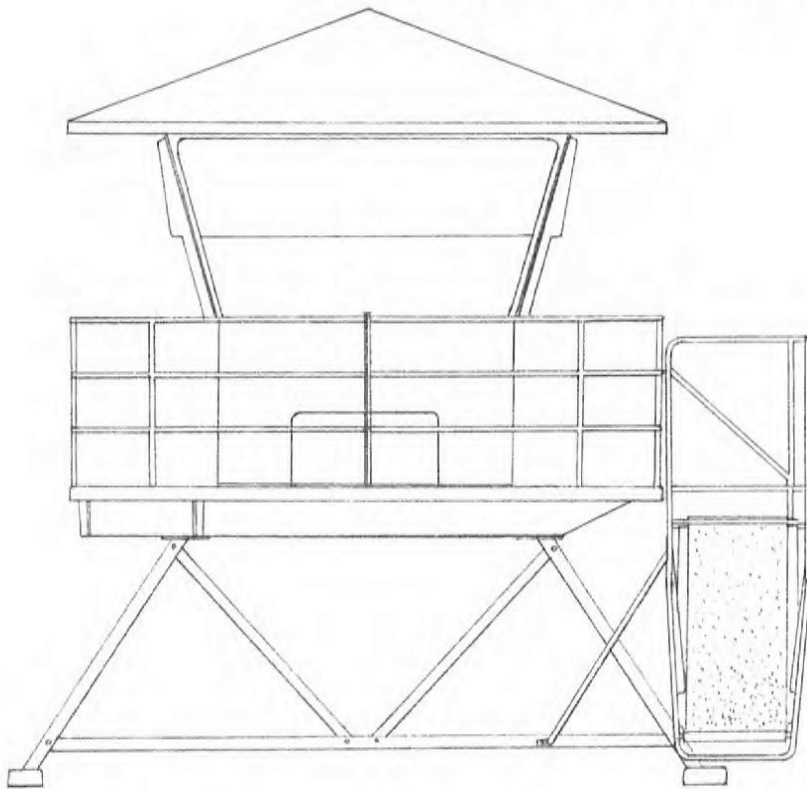
OPTIONS

- rescue board locker (accommodates 25" wide X 12' long board)
- 304 SS support structure, 16' 6" X 10" wide skids, 6' deck height
- reinforced cross members
- front mount 17' ramp, stainless steel truss structure, fiberglass runway
- ramp pivot adapters (left & right)
- custom full width interior counter-shelf with two locking cabinets located below
- roof insulation 1 1/2" urethane foam
- sliding lateral windows (left & right)
- rear sliding window assembly and vandal resistant shutter
- fold-up locking ladder



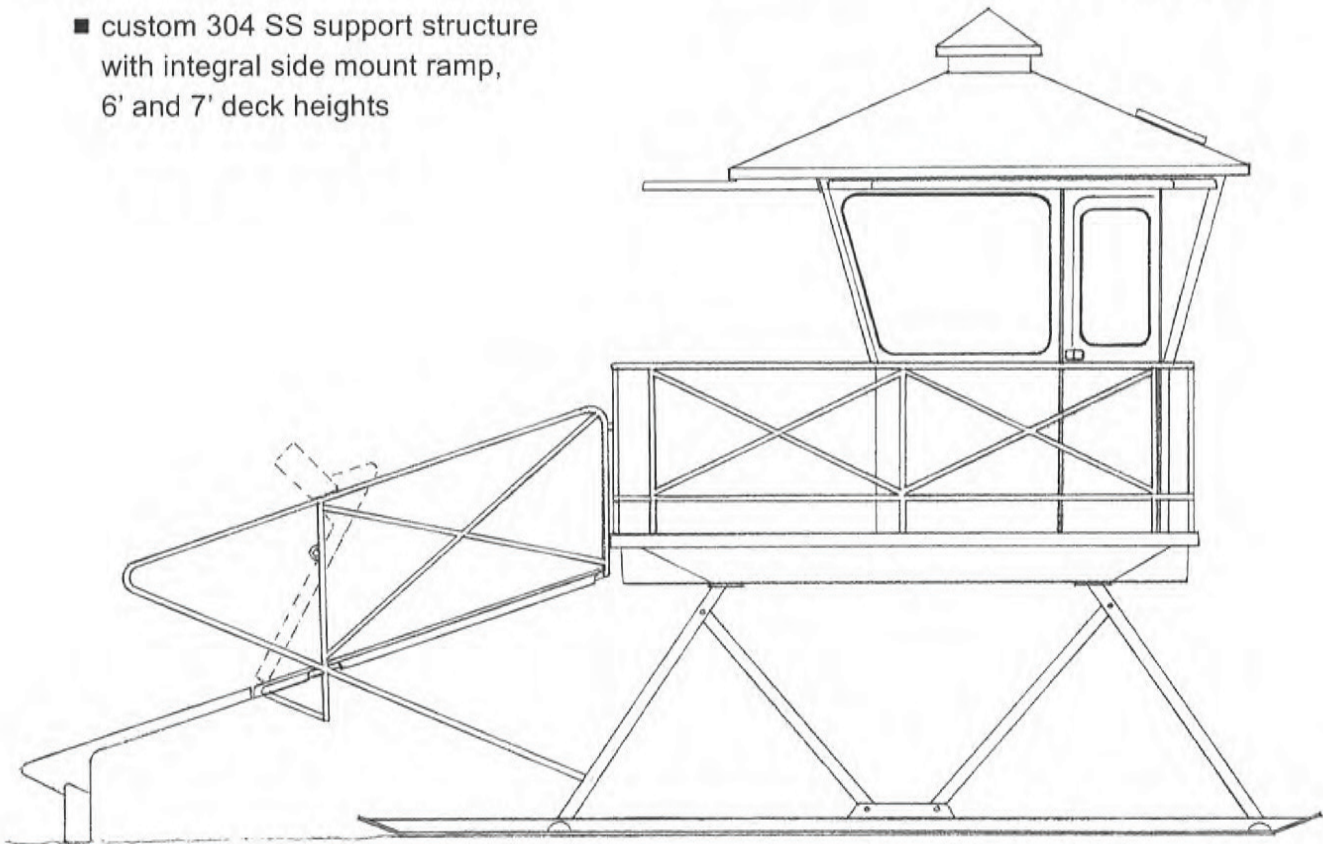
CUSTOM CONFIGURATIONS

PRICING AVAILABLE ON REQUEST



- rear lift structure, complete tower can be moved with front-end loader
- shelter centrally located on 12' X 12' deck, providing walkway on four sides
- front mount 22' ramp, SS truss structure, balsa core fiberglass runway
- front and side mount 35 degree low angle stairs, 6' and 8' deck height
- 304 SS support structure, 17' X 10" wide skids, 8' deck height
- 304 SS slab-mounted structures, 6' and 8' deck heights
- 20 degree side access ladder, diamond plate treads

- custom 304 SS support structure with integral side mount ramp, 6' and 7' deck heights



- integral front mount ramp with fold-up section